

TOP SCORING

BOOT & DART SPECIALS



New Landscape Roses

BIODIVERSITY

AWARDS

PLANTING AND AFTERCARE

FORM AND COLOUR





3 FOREWORD

4 BOOT & DART ROSES

Robust Qualities
Disease Resistance
Sustainability
Growing on their own roots
Roses and Sport

6 BIODIVERSITY

Pollinator accessible
Production of hips
Protection

9 AWARDS

Excellence Roses
Rose competitions

11 PLANTING AND AFTERCARE

Planting roses
Pruning roses
Fungal diseases
Pests

15 FORM AND COLOUR

Plant form
Flower morphology
Flower form

20 PLANT DESCRIPTIONS

Rosa BASEBALL®
Rosa CRICKET®
Rosa FLORIADE 2002®
Rosa FLUSHING MEADOW®
Rosa GIRO D'ITALIA®
Rosa MARATHON®
Rosa MATCHPOINT®
Rosa RALLY®
Rosa ROLAND GARROS®
Rosa RUGBY®
Rosa SHORT TRACK®
Rosa SPEEDWAY®
Rosa STREET DANCE®
Rosa VUELTA A ESPAÑA®

48 TABLE OF ROSES



Foreword

Dear Customer,

Planting Landscape Roses in public spaces is more popular than ever. For good reason, 40 years ago, roses planted in public spaces were the chance results of breeding garden and hybrid varieties. These roses were simply not tough enough to perform well in the difficult conditions, presented by public space.

Midway through the 1980s, Boot & Dart Nurseries became actively involved in breeding landscape roses for planting in public spaces. Since then we have developed a whole range of landscape roses that meet the most exacting requirements.

A wide range of modern Landscape Roses are available that satisfy all the important criteria for growing in public spaces. These are roses with compact growth, form excellent weed suppressing groundcover. They are disease resistant, winter hardy and grown on their own roots, which makes them suitable for hard pruning. They are abundant flowering roses, with single or semi-double blooms over a very long season; promoting biodiversity. Many of these roses have innovative features and are a welcome addition to our product range.

We are very proud that a number of Boot & Dart roses have won multiple awards at international competitions and shows. Our roses currently represent a class leading choice, for planting in public space.

We published the previous Rose Book in 2010. Since then our Research & Development (R&D) department continues to innovate and a number of outstanding rose varieties have been launched to our range. We will continue to update you on the latest developments in our rose breeding.

That's why you are receiving this updated Rose Book. Once again you will find it brimming with information about the top performing varieties, in our current rose range.

With best wishes,

Albert de Vries

Director

Boot & Dart Boomkwekerijen



'WE DEVOTE OUR CONSIDERABLE EXPERIENCE, KNOWLEDGE AND RESOURCES TO DEVELOP AWARD WINNING NEW VARIETIES; ROSES THAT WILL ENHANCE ANY PLANTING PROJECT'

Specialists in Rose Breeding

Roses play an important part in the commercial activities of Boot & Dart. In terms of product development, roses are our most important crop. We started rose breeding in the mid-1980s. Initially in collaboration with the Institute of Horticultural Plant Breeding in Wageningen, and later within our own Research & Development department in collaboration with De Ruiter Benelux B.V.

ROBUST QUALITIES

It is not without reason, that we call our new rose varieties winners. During the breeding and selection process, which takes around 10 years total, we apply strict criteria. As a result, all our roses fulfil the highest requirements for use in public spaces.

Important features:

- Compact, ground covering but non-creeping growth habit; spreading so weeds are suppressed.
- Very healthy and hardy
- Propagation on own roots by cuttings; prune with hedge trimmer, will not sucker
- Long and profuse flowering
- Self-cleaning; the petals drop after flowering, so the plant always looks beautiful
- Regular new roses, to complement the existing range

DISEASE RESISTANCE

In our trial fields, we plant promising new selections next to established varieties. In this way we expose the new hybrids to diseases which are then spread by less healthy plants. This increases the susceptibility to disease and only the strongest hybrids survive. There is no need to use fungicides or insecticides; during production or once they have been planted in public spaces.

SUSTAINABILITY

Disease-resistant plants improve your green options and are better for the environment. As growers, we actively look for opportunities to make our products and methods increasingly sustainable. This is reflected in various certifications, including the PlanetProof eco mark.

GROWING ON THEIR OWN ROOTS

Roses are traditionally propagated by grafting onto a rootstock. The risk of that method is that the rootstock will sprout again. These 'rootstock suckers' can be a problem, especially when plants are under more stressful conditions or have been pruned back. We consider it very important that Landscape Roses grow on their own roots. Our varieties are just as strong as grafted varieties with a similar vigour, denser branching and often tidier form.

ROSES AND SPORT

Nearly all our roses have names related to sports. The idea behind this is that roses from Boot & Dart radiate health and strength; properties that we also associate with sports.



Add colour to biodiversity

Roses are an ideal way of increasing biodiversity in your public green spaces. A number of plant properties are essential for optimum effect. In this chapter we will explain certain rose qualities. An explanation of the symbols used can be found inside the back of the cover. This will enable you to quickly see which roses have specific properties and therefore to make informed choices.

POLLINATOR ACCESSIBLE

First of all, it is important that roses do not have double blooms. This is because bees can easier reach the centre of the flower of single and semi-double blooms. In addition, fewer petals automatically mean more stamens, making the flower more attractive.

Scented roses are easier for insects to find than non-scented varieties. *Rosa rugosa* and hybrids are the only roses that produce both pollen and nectar.



'SEVERAL BOOT & DART ROSES PRODUCE HIPS IN LATE AUTUMN AND EARLY WINTER. THIS IS BENEFICIAL FOR BIODIVERSITY AND ENHANCES THE APPEARANCE OF THE BED'

'ALL BOOT & DART ROSES HAVE SINGLE OR SEMI-DOUBLE BLOOMS SO PARTICULARLY ATTRACTIVE TO BEES AND OTHER INSECTS'



All other roses do produce a lot of pollen but no nectar. Scented roses in our range include SHORT TRACK® and STREET DANCE®.

Besides bees, you will also see flies, hoverflies and beetles around near the flowers. Bumblebees and butterflies are less attracted to roses.

PRODUCTION OF HIPS

Another important property is the production of hips. Rosehips and

their seeds are mainly eaten by birds. In autumn and winter, they are an important food source for some species. These include greenfinch, blackbirds, goldfinches and fieldfare. Smaller mammals such as mice also eat the hips and seeds.

PROTECTION

The third and final feature is shelter. With their dense branching and thorns, shrub roses are ideal hiding and nesting places for small birds and mammals.



From winners to prize winners

Our range includes many roses that have won both national and international awards. Something we are very proud of, of course. We consider it a crowning achievement and, for you as a customer, an additional confirmation of the quality of our products.

In the plant descriptions, you can see exactly which awards we have received.

EXCELLENCE ROSES (FORMERLY TOPROOS)

Winning prizes requires you to meet strict criteria and to be patient. Roses registered for inspection by the Excellence Roses Foundation, for example, are planted in several rose test gardens in the Netherlands and Belgium for a period of three years. No plant protection products are used in these rose gardens. During the inspection period, the roses are assessed four times a year by the inspection committees. These committees are made up of rose growers, users and members of the Dutch Rose Association.

Criteria for the designation Excellence Rose:

Health: particular attention is paid to susceptibility to (downy) mildew, rust and black spot. The speed with which an infection damages the plant is also important.

Vigour: the roses must be vigorous enough to grow into a full bush within one season. With shrub roses it is important that a plant area quickly fills up, so that weeds do not stand a chance.

Flowering: the abundance of flowering, the colour of the buds and blooms, and colour fastness when the rose finishes flowering, the scent and self-cleaning properties of the blooms are assessed. The flowering period (continuous or repeat flowering) is also of importance.

ROSE COMPETITIONS

Our roses win prizes in national and international rose competitions almost every year. The most important competitions we participate in are the International Rose Competition in Westbroekpark in The Hague and the International Competition of Roses in Kortrijk.



Planting and aftercare: **get more out of your roses**



Many buyers think that managing roses is complicated and expensive. Nothing could be further from the truth. Of course, there are points to consider. If you take this into account, a bed of shrub roses will usually be cheaper than a lawn and barely more expensive than a bed of shrubs. Furthermore, shrub roses are often more attractive than grass or shrubs. As we already mentioned, roses are also very valuable for the biodiversity in your public green space.

In this chapter, we share tips and advice on how to ensure roses look their very best.

PLANTING ROSES

Roses grow best in nutritious and well-drained soil. The soil type itself is less important; any sandy, sandy, peat or clay soil is suitable, as long as it is not too limy. Drainage is important because roses do not tolerate standing water around the roots. Make sure the soil is well loosened. Disturbing layers can reduce growth and flowering. Before planting, it is a good idea to fertilise the soil, preferably with cow manure or special rose fertiliser.

The roots must be moistened well before planting. This is best done by plunging them in water. The planting hole must be large enough to allow the roots to hang down freely. Firm the plants securely to ensure that the roots are in good contact with the soil. We advise you to respray the shrubs after planting.

Biodegradable pots

More and more roses are grown in biodegradable pots. Follow the same procedure with these plants but press or cut the pot open before planting. That will make it easier for the roots to grow into the soil. The top edge of the pots should be a few centimetres below ground level. The loosened soil will always settle a little and the surface will eventually be level with the top edge of the pots.

PRUNING ROSES

Rose pruning is usually done in late winter and early spring, between mid-February and early April. Most green space managers use a cutting bar or hedge trimmer to prune shrub roses. The advantage of that is that the pruning wounds are relatively small. We would not recommend using a flail hedge trimmer. The resulting wounds are coarser and much larger, which increases the chance of diseases entering the plant through the wounds. Make sure that the pruning waste is extracted and disposed of immediately.

How much the roses are pruned back obviously depends on the cultivar and the desired plant height.

PREVENTING AND CONTROLLING FUNGAL DISEASES

The three main diseases that can affect shrub roses are (downy) mildew, rust and black spot. These diseases are caused by fungi. Besides the fact that the plants do not look very pretty, fungi cause growth disorders, deformities of leaves and flowers and, eventually, leaf drop.

You can reduce susceptibility to fungi by ensuring that the soil nutrition is optimal. Any infestations that do nevertheless occur can only be controlled with plant protection products.

A good example of a vigorous rose is CRICKET®, which has proven to be practically resistant to mildew and black spot.

‘ROSE CULTIVARS VARY SIGNIFICANTLY WHEN IT COMES TO FUNGAL SUSCEPTIBILITY. WE APPLY STRICT CRITERIA IN THAT RESPECT DURING THE BREEDING AND SELECTION PROCESS. NEW ROSE VARIETIES ARE GROWN IN TEST FIELDS FOR AN AVERAGE OF SEVEN TO NINE YEARS. THAT IS LONG ENOUGH FOR A FULL AND RELIABLE ASSESSMENT.’



DEALING WITH PESTS

The main pests that can affect roses are aphids and nematodes. There are various types of aphid, but the effect of an infestation is always the same. The aphids suck sap from the plants, which can cause serious deformation of shoots, flowers and buds.

Nematodes are tiny worm-like animals that damage the roots. This slows the growth and can cause leaf discoloration. Roses affected by nematodes become weakened and therefore more susceptible to fungi.

If a rose bed is badly affected by nematodes, the roses should be replaced for at least a few years with a different, insensitive plant. After which, roses can be planted again. If the infestation is light, you could also opt for a mix of summer flowers or *Tagetes* (African marigold).



'LADYBIRDS CONTROL
APHIDS BIOLOGICALLY'





Vary **form** and **colour**

Roses offer an enormous variety of plant and flower forms and flower colours. A good plant form is very important to the potential uses of the cultivar. The variety in flower colour speaks for itself; roses come in every colour ranging from pure white to deep purplish red. Flower forms may seem less important, but there are sometimes practical reasons for choosing a particular form, such as improving biodiversity or enhancing the desired appearance of a design.

PLANT FORM

Low and wide-growing shrubs are very suitable for use in planting beds. It is important that the plants do not stay too low, otherwise weeds will still grow up between the branches. The trick is to create an ideal ratio between the height and width of the plants.

The traditional classification of rose varieties (Floribunda and Polyantha roses, Hybrid Tea, etc.) says little about the growth habit of the plants. Most modern shrub roses are in fact Floribunda roses. The flowers appear in large clusters, which extends the flowering period.

In this booklet, we use the following height descriptions:

Low shrubs

up to about 75 cm high, with excellent ground covering properties;

Medium-height shrubs

growing to between approx. 75 cm and 1.5 m high, bushy and sufficient ground covering;

Tall shrubs

growing taller than 1.5 m, bushy but slightly less ground cover than plants from the other two groups.



‘SINGLE BLOOMS ARE THE BEST CHOICE WHEN IT COMES TO BIODIVERSITY. THE FLOWERS ARE OPEN, AND ALL PARTS ARE EASILY ACCESSIBLE FOR INSECTS’

‘SEMI-DOUBLE BLOOMS ARE STILL ACCEPTABLE FOR IMPROVING BIODIVERSITY. THE PARTS AT THE CENTRE OF THE FLOWER ARE STILL (FAIRLY) EASILY ACCESSIBLE FOR INSECTS.’



‘ROSES WITH DOUBLE BLOOMS LOOK VERY ATTRACTIVE BUT ARE THE LEAST INTERESTING GROUP WITH REGARD TO IMPROVING BIODIVERSITY.’



FLOWER MORPHOLOGY

The flower of a rose consists of the following elements:

Sepals (1): the green petals below the flower;

Petals (2): the eye-catching elements of the corolla that give the flower its colour. They are above the sepals;

Styles (3) and stigma (4): female organs of a flower, at the centre of the flower;

Stamens (5): male parts of a flower, surrounding the styles and stigma;

Ovary (6): located below the styles and is the thickened green area below the sepals. This is where the rosehip later develops.

FLOWER FORM

Single blooms

By nature, a rose bloom has a whorl of five petals. This is called a single bloom. Single blooms look the most natural and have the advantage that the petals easily drop when the rose finishes flowering ('cleaning'). Poorly cleaning flowers spoil the appearance considerably. Cleaning is therefore an important criterion in the selection of roses for use in public spaces.

Semi-double blooms

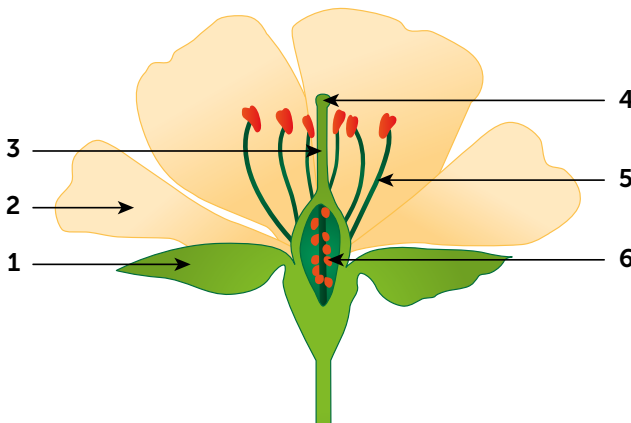
These are flowers with more than one whorl of petals, and which still have the stamens in the centre. In semi-double blooms, a number of stamens have fused into petaloids. In terms of form and colour, these are usually the same as the five petals of a single bloom.

Double blooms

In double blooms, almost all the stamens have fused into petaloids. These fill the centre completely, preventing insects from reaching them. Double blooms consequently provide shelter for other insects such as spiders and earwigs.

Double blooms do not self-clean well and faded flowers tend to remain visible in shrubs more often. Most double flowers do not produce hips after flowering, so have little to offer birds either.

All Boot & Dart roses are single or semi-double blooms.









Rosa BASEBALL®

('Bokraruibas' PBR)

- > Floriferous shrub rose with an upright habit
 - > Height: approx. 1.25 m
 - > Leaves: healthy, glossy dark blue-green, remain on the plant for a long time
 - > Flowers: single, intense dark pink with a slightly lighter centre
 - > Flowering period: June to late-October
 - > Hips: limited, light orange-red
 - > Uses: solitary or in groups between ground cover, small and medium-sized planting areas and as accent planting
-
- Management intensity: average
 - Pruning frequency: 1x every 2 years
 - Plants per m²: 5-7



ROSA BASEBALL®

BASEBALL® is a rose that, even from a distance, immediately stands out because of its unique, intense dark pink flowers. It is a vigorous rose with a broad, upright habit, growing to a height up to approx. 1.25 m and a width of approx. 80 cm. The firm twigs are densely covered with thorns. The leaves are glossy dark blue green. The leaves remain on the plant for a long time in the autumn, so weeds also stand little chance later in the season.

The single flowers are intense dark pink with a slightly lighter centre. The contrast with the dark blue-green leaves makes the intense flower colour stand out even more. The blooms self-clean very well. The abundant flowering starts around the beginning of June, continuing to late October, sometimes even early November. This naturally depends on location, soil conditions and the local climatic conditions. There will usually be very few hips.

Because of its slightly more upright habit, BASEBALL® can be best be planted as a solitary specimen or in small groups between (evergreen) ground covers. Use in small to medium-sized planting areas

is an equally good option. With its very striking flower colour, BASEBALL® is also very suitable for accent planting.

BASEBALL® was awarded the Certificate of Recommendation during the International Rose Competition in The Hague (2013).





Rosa CRICKET®

('Bokraruicri' PBR)

- > Ground cover shrub rose with a broad growth and abundant flowering
 - > Height: approx. 70 cm
 - > Leaves: very healthy, glossy dark green, remain on the plant for a long time
 - > Flowers: single, warm red with a bright yellow centre
 - > Flowering period: June to late-October
 - > Hips: limited, light orange-red
 - > Uses: in planting areas of any size, on embankments, in residential areas
-
- Management intensity: extensive
 - Pruning frequency: 1x every 3 years
 - Plants per m²: 4-5



ROSA CRICKET®

CRICKET® is a very vigorous ground cover rose that looks a little like RALLY®. The main differences are: lower plant height, a relatively wider growth and slightly different flower colour. CRICKET® will grow approx. 70 cm tall and wide. The leaves are glossy dark green and remain on the plant for a long time in the autumn so that weeds that germinate later in the season will also stand little chance of developing. CRICKET® has proven to be practically resistant to mildew and black spot.

The single flowers are warm red and have a bright yellow centre, giving the rose a beautiful fresh look. They self-clean very well. The very abundant flowering starts around the beginning of June, continuing to late October, sometimes even early November. This naturally depends on the location, soil conditions and the local climatic conditions. CRICKET® produces few hips.

CRICKET® is ideal for use as a low ground cover in planting areas of any size. Alternatively, CRICKET® is an excellent choice in residential areas, for example, where the beautiful flower colour will brighten the street setting. Lastly, CRICKET® is also very suitable for planters.

Just like MARATHON® and RUGBY®, CRICKET® is extremely versatile; an all-rounder that is suitable for many different uses.

CRICKET® was awarded a 1st Class Certificate during the International Rose Competition in The Hague (2010).





Rosa FLORIADE 2002[®]

('Bokramar' ^{PBR})

- > Ground cover shrub rose
 - > Height: up to approx. 80 cm
 - > Leaves: glossy bright green
 - > Flowers: single, warm pink, fading to a lighter pink, late-May to early-November
 - > Flowering period: late-May to late-October/early-November
 - > Hips: oval, pale orange
 - > Uses: in planting areas, on embankments, in residential areas
-
- Management intensity: extensive
 - Pruning frequency: 1x every 3 years
 - Plants per m²: 4-5



ROSA FLORIADE 2002®

FLORIADE 2002® is a striking shrub rose with distinctively coloured flowers. It is a vigorous rose that also grows excellently on its own root. With a height of approx. 80 cm and a width of approx. 1 m, it covers the ground well. The leaves are glossy bright green and remain on the plant for a particularly long time in autumn.



The flowers are single and warm pink in colour. The most notable characteristic of FLORIADE 2002® is the lighter pink discoloration of the flowers before the petals fall off. The combination of freshly opened warm pink flowers and the lighter pink, older blooms create a beautiful two-tone effect. Despite this discoloration, the flowers clean well. The flowering period is from late May to late October/early November. The flowers are followed by oval, pale orange hips.

FLORIADE 2002® is ideal for use as ground cover, on embankments and planting areas of any size. Combinations with purple-leaved shrubs such as Weigela NAOMI CAMPBELL® or Physocarpus opulifolius ALL BLACK® are recommended.

Rosa FLORIADE 2002® was named at a ceremony when we received our ISO 9001 certificate during the Floriade in 2002. Thousands of Rosa FLORIADE 2002® were blooming beautifully at the entrance of the World Horticultural Exhibition in Vijfhuizen.



Rosa FLUSHING MEADOW®

('Bokraflush' ^{PBR})

- > Shrub rose with a wide upright habit
 - > Height: up to approx. 80 cm
 - > Leaves: glossy dark green
 - > Flowers: single, deep golden yellow/ flower buds: orange-yellow
 - > Flowering period: mid-June to late-September
 - > Hips: hardly any
 - > A beautiful combination of foliage and bloom colours thanks to the purplish-red young shoots
 - > Uses: in small to medium-sized planting areas, at prime locations
-
- Management intensity: average
 - Pruning frequency: 1x every 2 years
 - Plants per m²: 4-5



ROSA FLUSHING MEADOW®

A striking rose that is slightly more upright in growth than most other winners. It has wide growth habit and, with a 2-year mowing regime, will grow to a height of approx. 80 cm. The leaves on the young shoots are an attractive purplish red to bronze in colour. The full-grown leaves are glossy dark green in summer.

The deep golden yellow flowers bloom from mid-June to late September. They are medium in size with a diameter of approx. 7 cm. The flowers are single to semi-double and clean well. The fresh flower colour of FLUSHING MEADOW® is the most striking feature of this rose and is enhanced by the glossy dark green foliage.

FLUSHING MEADOW® is extremely suitable for use in small to medium-sized planting areas. Due to its somewhat more upright habit, this variety also looks good in urban rose beds and planters.





Rosa GIRO D'ITALIA®

('Bokraruigi' ^{PBR})

- > Ground cover shrub rose with a broad growth and abundant flowering
 - > Height: approx. 70 cm
 - > Leaves: very healthy, glossy dark green, remain on the plant until late autumn
 - > Flowers: single, deep pink with a slightly lighter centre
 - > Flowering period: early-June to late-September
 - > Hips: small, orange
 - > Uses: in planting areas of any size, on embankments, roadside planting, in residential areas
-
- Management intensity: extensive
 - Pruning frequency: 1x every 3 years
 - Plants per m²: 4-5



ROSA GIRO D'ITALIA®

GIRO D'ITALIA® is a very healthy and strong ground cover rose with a spectacular flower colour that looks a little like BASEBALL®. GIRO D'ITALIA® grows lower in comparison, all parts are smaller, and the deep pink colour of the flowers is less intense. They also turn a lighter pink when they finish flowering. GIRO D'ITALIA® grows to a height and width of approx. 70 cm. The leaves are glossy dark green and very healthy. They remain on the plant for a long time in autumn, so weeds also stand little chance later in the season.

The single flowers are deep pink with a slightly lighter centre. They self-clean very well. The very abundant flowering starts around early June and continues until late September. This naturally depends on the location, soil conditions and the local climatic conditions. The flowers are followed by countless small orange hips.

GIRO D'ITALIA® is very suitable for low ground cover in planting areas of any size, roadside planting, residential areas and on embankments. Thanks to its handy size GIRO D'ITALIA® is also very suitable for planters.





Rosa MARATHON®

('Bokrathon' PBR)

- > Very strong and versatile ground cover rose
 - > Height: approx. 70 cm
 - > Leaves: very healthy, glossy dark green, remain on the plant for a long time
 - > Flowers: single, dark pinkish red
 - > Flowering period: early-June to late-October
 - > Hips: orange-red
 - > Uses: in planting areas of any size, on embankments, roadside planting, in residential areas
-
- Management intensity: extensive
 - Pruning frequency: 1x every 3 years
 - Plants per m²: 4-5



ROSA MARATHON®

Very good and versatile ground cover shrub rose with extremely strong flower colour. MARATHON® grows to a height of approx. 70 cm and a width of approx. 80 cm. The slightly overhanging twigs make it a good ground cover. The twigs do not root to the ground so that hoeing always remains possible. The leaves are glossy dark green and remain on the plant for a long time in autumn. The plant will often still have leaves around mid-December. This enhances the green and healthy impression and prevents weeds.

The single dark pinkish-red flowers, which clean excellently, bloom from early June to late October. They are followed by numerous orange-red hips that remain on the plant well into winter.

MARATHON® is an extremely versatile rose that can be used in planting areas of any size; as ground cover or in smaller groups between lower ground cover such as *Pachysandra* or *Waldsteinia*. The beautiful colour always looks stunning in roadside planting and residential areas. MARATHON® is also very suitable for use in planters.

Just like CRICKET® and RUGBY® MARATHON® is extremely versatile, an all-rounder that is suitable for many different uses.

After being awarded a Certificate in Gold (Department A) during the International Rose Competition in The Hague in 2004, MARATHON® received a Certificate of Recommendation in 2008 during the same international competition.

MARATHON® was also awarded the Excellence Rose designation and the prestigious German ADR designation.





Rosa MATCHPOINT®

('Bokramatch' PBR)

- > Very strong and versatile ground cover rose
 - > Height: approx. 70 cm
 - > Leaves: very healthy, glossy dark green, remain on the plant for a long time
 - > Flowers: semi-double, deep pink
 - > Flowering period: early-June to late-October
 - > Hips: orange-red
 - > Uses: in planting areas of any size, on embankments, roadside planting, in residential areas
-
- Management intensity: extensive
 - Pruning frequency: 1x every 3 years
 - Plants per m²: 4-5



ROSA MATCHPOINT®

Originating as a sister seedling of MARATHON®, MATCHPOINT® is also a particularly good ground cover rose. The general properties are therefore the same as those of MARATHON®. MATCHPOINT® grows to a height of approx. 70 cm and a width of approx. 80 cm. The slightly overhanging twigs make it a good ground cover. The twigs do not root to the ground so that hoeing always remains possible. The leaves are glossy dark green and remain on the plant for a long time in autumn. The plant will often still have leaves around mid-December, which enhances the green and healthy impression. It also helps prevent weeds later in the year.

The flowers bloom from early June to late October. They are deep pink with a lighter centre and semi-double. The flowers have a striking yellow centre of stamens, especially just after they open. The flowers fade a little lighter, but the petals fall off before they turn ugly. After flowering, the plant produces numerous orange-red hips.

MATCHPOINT® is a versatile rose that can be used in planting areas of any size. With its abundant flowering, this rose is an absolute eye-catcher in a large planting area. But MATCHPOINT® look equally stunning in small groups among lower ground covers. Options include combinations with *Potentilla fruticosa* (low-growing cultivars) or *Cotoneaster dammeri* 'Major'.





Rosa RALLY®

('Bokrapolo' PBR)

- > Very floriferous ground cover shrub rose
 - > Height: approx. 90 cm
 - > Leaves: healthy, glossy dark green, remain on the plant for a long time
 - > Flowers: single, deep red with dark yellow centre
 - > Flowering period: June to late-October
 - > Hips: small, orange-red
 - > Uses: in planting areas of any size, on embankments, in residential areas
-
- Management intensity: extensive
 - Pruning frequency: 1x every 3 years
 - Plants per m²: 4-5



ROSA RALLY®



RALLY® is very suitable as a low ground cover in planting areas of any size. The red flower colour is particularly spectacular when planted in large groups. But RALLY® look equally stunning in small groups among lower ground covers. Lastly, RALLY® is also very suitable for planters.

RALLY® was also awarded the Excellence Rose designation and the prestigious German ADR designation.

RALLY® is a very healthy and strong ground cover rose with a beautiful charm. It grows around 90 cm high and a good 70 cm wide. The leaves of this shrub rose are glossy dark green. They remain on the plant for a long time in the autumn, so weeds also stand little chance later in the season.

The flowers are deep red and single. They self-clean very well. The very abundant flowering starts around the beginning of June, continuing to late October, sometimes even early November. This naturally depends on the location, soil conditions and the local climatic conditions. The flowers are followed by countless small orange-red hips.





Rosa ROLAND GARROS®

('Bokraruirol' PBR)

- > Shrub rose with a wide upright habit
 - > Height: up to approx. 1 m
 - > Leaves: very healthy, glossy dark green, remain on the plant for a long time
 - > Flowers: single, dark yellow
 - > Flowering period: mid-June to late-October
 - > Hips: hardly any
 - > Uses: in planting areas of any size, on embankments, roadside planting, in residential areas
-
- Management intensity: extensive
 - Pruning frequency: 1x every 2 years
 - Plants per m²: 4-5



ROSA ROLAND GARROS®

ROLAND GARROS® is a very strong plant, especially for a yellow flowering rose. It has a broad upright habit and grows to around 1 m high and wide. The very healthy leaves are glossy dark green. They remain on the plant for a long time in the autumn, so weeds also stand little chance later in the season.

Another positive property of ROLAND GARROS® is the extremely long flowering period. Deep yellow single flowers appear from mid-June to late October. When they finish blooming, the flowers turn a slightly lighter yellow, but the general colour impression is still deep yellow. The blooms self-clean well. There will be very few hips, if any.

The flower colour of ROLAND GARROS® is one of the most important characteristics of this beautiful shrub rose.

ROLAND GARROS® is highly suitable for use in planting areas, on embankments, roadside planting and in residential areas.

ROLAND GARROS® was awarded a Gold Certificate at the International Rose Competition in The Hague (2008).





Rosa RUGBY®

('Bokrarug' PBR)

- > Compact shrub rose with a widely spreading upright habit
 - > Height: up to approx. 80 cm
 - > Leaves: glossy dark green, remain on the plant for a long time
 - > Flowers: single, pure white / flower buds: creamy yellow
 - > Flowering period: late-May to late-November
 - > Hips: limited, orange
 - > Uses: in medium-sized to large planting areas, roadside planting, on embankments, in residential areas
-
- Management intensity: extensive
 - Pruning frequency: 1x every 3 years
 - Plants per m²: 4-5



ROSA RUGBY®

RUGBY® is a striking, floriferous shrub rose with relatively large white flowers that appear throughout a very long flowering period. The plant has a widely spreading, upright habit, growing to a height of approx. 80 cm and a diameter of approx. 1 m. The healthy leaves are glossy dark green. They remain on the plant for a very long time, usually into December. This means weeds also stand little chance later in the season.

The flower buds of RUGBY® are creamy yellow. They open into relatively large, lightly scented single flowers. These are pure white, with lovely dark yellow stamens in the centre. The open flowers contrast beautifully with the creamy-yellow flower buds and dark green foliage. The flowering period is exceptionally long, from late May to late November. The flowers self-clean very well, and no spent flowers are left hanging in the shrub.

With its dense habit, RUGBY® is an excellent choice for planting areas of any size. But RUGBY® look equally stunning in roadside planting and on embankments. Due to the low-maintenance management, this beautiful rose can also be used in more natural plantings.

Just like CRICKET® and MARATHON®, RUGBY® is extremely versatile, an absolute all-rounder that is suitable for many different uses.

RUGBY® was awarded a Certificate of Recommendation during the International Rose Competition in The Hague (2003).





Rosa **SHORT TRACK**®

('Bokratrack' ^{PBR})

- > Very strong ground cover rose with a wide growth habit
 - > Height: up to approx. 60 cm
 - > Leaves: healthy, dark green
 - > Flowers: single, scarlet with a yellow centre, scented
 - > Flowering period: May to early-October
 - > Hips: dark orange-red
 - > Special characteristic: very resistant to sea wind and road salt
 - > Uses: in planting areas, on embankments, traffic islands and roadside planting
-
- Management intensity: extensive
 - Pruning frequency: 1x every 4 years
 - Plants per m²: 4-5



ROSA SHORT TRACK®

SHORT TRACK® is a rose that combines a dense, low and wide habit with good health, a long flowering period and hips as an encore. Thanks to its wide, almost creeping habit, SHORT TRACK® is very suitable for use as a ground cover in planting areas. Under a mowing regime, this plant will grow to a height of approx. 60 cm and a width of 80 cm. Interestingly, the twigs have practically no thorns, which makes processing the plants much easier and less unpleasant. The leaves are dark green and slightly glossy.

The flowers open from mid-May and SHORT TRACK® bloom through to mid-October. The flowers are a stunning scarlet when they open and turn a warm pinkish red after a few days. The flowers self-clean excellently. They are followed by dark orange-red hips which, in autumn, are much sought after by goldfinches and chaffinches. SHORT TRACK® do not self-seed, so the chance of them going wild is nil.

SHORT TRACK® is very resistant to (sea) wind and road salt. It is therefore ideal for planting along busy roads, on roundabouts, embankments and central reservations. SHORT TRACK® is also suitable for planters and small-scale projects.

SHORT TRACK®, SPEEDWAY® and STREET DANCE® belong to a new generation of shrub roses; they have a dense, low growth habit, are very strong and bloom beautifully for a long period.

The plant is low-maintenance and therefore also suitable for more natural plantings.





Rosa SPEEDWAY®

('Boruispewy' PBR)

- > Shrub rose with a low, wide growth habit
- > Height: approx. 70 cm
- > Leaves: healthy, dark green
- > Flowers: bright pink with a yellow centre, single, scented
- > Flowering period: early-June to late-October
- > Hips: flat, orange-red
- > Special characteristic: resistant to sea wind and road salt
- > Uses: in planting areas, on embankments, traffic islands and roadside planting

- Management intensity: extensive
- Pruning frequency: 1x every 4 years
- Plants per m²: 4-5

New introduction for Autumn 2022



ROSA SPEEDWAY®

In terms of appearance and properties, SPEEDWAY® is in between SHORT TRACK® and STREET DANCE®. The plant shape is clearly the same as STREET DANCE®. The rose is naturally rather block-like, with a dense, low and wide habit and flattened on top. Planting areas consequently fill beautifully and evenly. This habit makes SPEEDWAY® very suitable for use in planting areas of any size, from small to very large. The plant will grow to a height of approx. 70 cm and a width of 80 cm. The twigs are thornless, which makes maintenance easier and less unpleasant. The leaves are dark green and slightly glossy. They turn orange yellow in autumn.

The flowers open from mid-May and SPEEDWAY® bloom continuously through to late October. The flowers are more like SHORT TRACK® but lighter. They are around 7 cm and bright pink with a yellow centre. When they finish flowering, they turn a slightly lighter colour. The flowers contrast beautifully with the foliage and self-clean very well. They are followed by flat, orange-red hips. SPEEDWAY® continues to flower while hips are developing. The hips are popular with goldfinches and chaffinches in autumn. SPEEDWAY® do not self-seed, so the chance of them going wild is nil.

SPEEDWAY® is extremely resistant to (sea) wind and road salt. It is therefore ideal for planting along busy roads, on roundabouts, embankments and central reservations. SPEEDWAY® is also suitable for planters and small-scale projects. The plant is low-maintenance and therefore also suitable for more natural plantings.

SHORT TRACK®, SPEEDWAY® and STREET DANCE® belong to a new generation of shrub roses; they have a dense, low growth habit, are very strong and bloom beautifully for a long period. SPEEDWAY® is the latest edition to this line-up with new flower colours.





Rosa STREET DANCE®

('Boruistda' PBR)

- > Shrub rose with a low, wide growth habit
 - > Height: approx. 70 cm
 - > Leaves: healthy, dark green
 - > Flowers: semi-double, warm pink with a yellow centre, scented
 - > Flowering period: mid-May to late-October
 - > Hips: hardly any
 - > Special characteristic: very resistant to sea wind and road salt
 - > Uses: in planting areas, on embankments, traffic islands and roadside planting
-
- Management intensity: extensive
 - Pruning frequency: 1x every 4 years
 - Plants per m²: 4-5



ROSA STREET DANCE®

The most eye-catching feature of STREET DANCE® is its natural block-like appearance. The dense, low and wide habit is flattened on top. A planting area will consequently fill beautifully and evenly. That same wide and dense habit makes SPEEDWAY® very suitable for use in planting areas of any size, from small to very large. The plant will grow to a height of approx. 70 cm and a width of 80 cm. The twigs are practically thornless, which makes maintenance easier and less unpleasant. The leaves are dark green and slightly glossy.

STREET DANCE® blooms from mid-May to late October. The flowers are relatively large with a diameter of approx. 7 cm. They are warm pink and semi-double. The tiny yellow centre is clearly visible and therefore easily accessible for insects. The blooms self-clean well. STREET DANCE® produces very few hips, if any.

STREET DANCE® is extremely resistant to (sea) wind and road salt. This makes it ideal for planting along busy roads, on roundabouts, embankments and central reservations. The plant is low-maintenance and therefore also suitable for more natural plantings, despite its semi-double blooms.

SHORT TRACK®, SPEEDWAY® and STREET DANCE® belong to a new generation of shrub roses; they have a dense, low growth habit, are very strong and bloom beautifully for a long period.

STREET DANCE® was awarded a Gold Certificate at the International Rose Competition in The Hague (2018).





Rosa VUELTA A ESPAÑA®

('Boruiora' PBR)

- > Ground cover shrub rose with a broad habit and abundant flowering
 - > Height: approx. 70 cm
 - > Leaves: very healthy, glossy fresh green, remain on the plant for a long time
 - > Flowers: single, warm, deep orange with a yellow centre
 - > Flowering period: early-June to late-September
 - > Hips: limited, round, orange-red
 - > Uses: in planting areas of any size, on embankments, roadside planting, in residential areas, at prime locations
-
- Management intensity: average
 - Pruning frequency: 1x every 2 years
 - Plants per m²: 4-5

New introduction for Autumn 2022



ROSA VUELTA A ESPAÑA®

VUELTA A ESPAÑA® is the first orange-flowering rose in our winners' range. It is a healthy and strong ground cover rose that resembles GIRO D'ITALIA®, that is why this rose is also named after a cycling race. VUELTA A ESPAÑA® grows to a height and width of approx. 70 cm. The twigs have very few thorns. Longer shoots develop occasionally, so biannual pruning is recommended. The young shoots are reddish-brown, the summer leaves are glossy, fresh green and very healthy. They remain on the plant for a long time in the autumn, so weeds also stand little chance later in the season.

The single flowers are a warm, deep orange with a yellow centre. As the flowers age, the edges of the petals turn pink and the centre dark yellow. The blooms self-clean very well. The very abundant flowering starts around early June and continues until late September. The flowers are followed by just a few small, round orange-red hips.

Compared to other orange-flowering roses, VUELTA A ESPAÑA®, is healthier, the flowering period is longer, and it fills planting areas densely. VUELTA A

ESPAÑA® is very suitable for low ground cover in planting areas of any size, roadside planting, residential areas and on embankments. Thanks to its handy size, VUELTA A ESPAÑA® is also very suitable for growing in planters.



ROSA

	Height (cm)	5 Winter hardiness zone (USDA)	Flower form	Flower colour	Hips	Bees	Birds fruit and seeds	Shelter or nesting place	Small mammals
BASEBALL®	125	6	s		+	x		x	
CRICKET®	70	5	s		+	x		x	
FLORIADE 2002®	80	5	s		++	x	x	x	
FLUSHING MEADOW®	80	6	s		-	x		x	
GIRO D'ITALIA®	70	6	s		++	x	x	x	
MARATHON®	70	5	s		++	x	x	x	
MATCHPOINT®	70	5	sd		++	x	x	x	
RALLY®	90	6	s		++	x	x	x	
ROLAND GARROS®	100	6	s		-	x		x	
RUGBY®	80	6	s		+	x		x	
SHORT TRACK®	60	5	s		++	x	x	x	x
SPEEDWAY®	70	5	s		++	x	x	x	x
STREET DANCE®	70	5	sd		-	x		x	
VUELTA A ESPAÑA®	70	6	s		+	x		x	

s = single blooms

sd = semi-double blooms



Explanation of the pictograms



Shows the winter hardiness zone.



Provides nectar and pollen for bees and other flying insects.



Provides shelter and nesting opportunities for birds and small mammals.



Produces fruits and seed which are eaten by birds.



Produces fruit and seed which are eaten by small mammals.



Boot & Dart
Nurseries

T +31 (0)172 235 235
verkoop@bootendart.nl
www.bootendart.nl

